

**PRODUCT CODE: PS1B**  
PLAIN SADDLE

**DESCRIPTION**

20mm Plain Saddle

**FINISH**

Black Enamel

**MATERIAL**

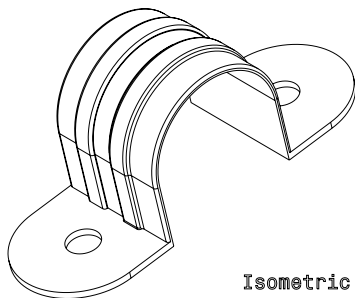
Pressed Steel

**PACKAGING**

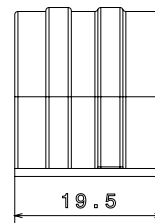
Packed in qty 100

**ADDITIONAL NOTES**

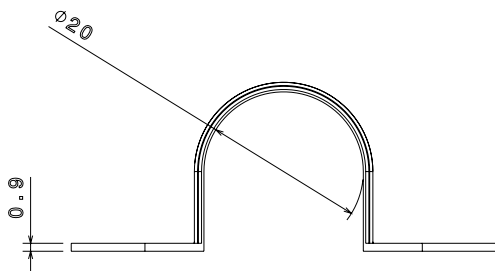
Conforms to BS EN61386-1  
Compliant to LU Standard 1-085 (for use on surface & sub-surface locations)



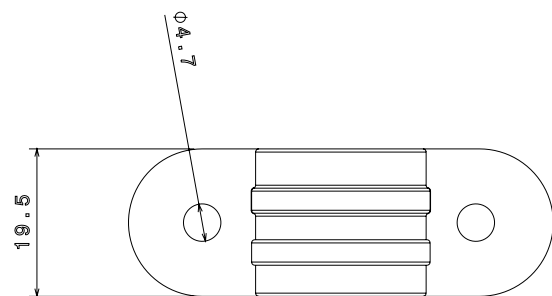
Isometric view



Side View



Front view



Top view